

*Look the World over, Then come Home to the Finest—Frankoma*



# FRANKOMA POTTERY

1981

\$1.00

# Why Frankoma-?

## THE FRANKOMA STORY

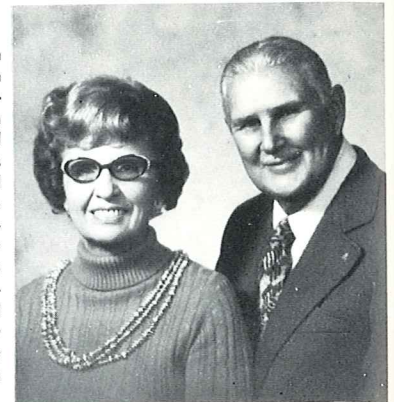
FRANKOMA POTTERY has rightfully earned its position as America's outstanding creators of "useful and beautiful" earthenware. The colors, textures and crafted designs are created at Frankoma, and are unique in American ceramics. Frankoma entered the field of ceramics in 1933, utilizing the heritage left it by its predecessors, the Southwest Indians. Our aim was to combine the traditional art of the Indians, the spirit of the American Pioneer and the creative tendencies of the youth of the Great Southwest, and mold them into good pottery forms.

John Frank, originator of "Frankoma," came to Oklahoma from Chicago in 1927. His teaching Art and Pottery at the University of Oklahoma and his work with the geological survey—unearthing the Oklahoma clay deposits—brought together valuable material for his future venture of "potting." In 1933 he started a "studio" pottery in Norman, Oklahoma, —equipped with one small kiln, a butter churn for mixing clay, a fruit jar for grinding glazes and a few other crude tools and tables. It was necessary to continue teaching until enough ware was produced to prove that a product could be made of Oklahoma clays that was a contribution to Art and Ceramics and still salable. Resigning his teaching in 1936 he and his wife, Grace Lee, working side by side, set out on a venture of creating beautiful pottery for every day living. They felt the need of using Oklahoma clays for Oklahoma's first pottery. First a clay from Ada was used, then in 1954 a red burning clay dug at Sapulpa became the basis for all Frankoma ware. In 1938 the "studio" grew into a small factory as it moved from Norman to Sapulpa, where it is now. (Original plant 5,500 square feet; through the years it has grown to the existing 79,000 square feet.)

Frankoma demanded of itself to make as fine a pottery as could be made considering the limitations of its materials. This means constant research to take advantage of raw materials and processes as they are brought to light.

Pottery enjoys so many advantages over the more "refined" and delicate ceramic wares. Frankoma Pottery is manufactured by its unique once-fired process—clay body and colored glaze are fused and fired at the maturing point of the clay, and tempered as it slowly cools. It can be used "indoors—outdoors" because of its ruggedness and durability. It can really "take" the handling of every day use. It can be used in a dishwasher. It is also ovenproof and food can be served in the same dish in which it is baked or prepared. It also keeps foods and drinks hot much longer. Color is such an indispensable part of today's decor, and Frankoma creates an exciting wide range of colors and textures. Our "Rutile Art Glazes" which have identified Frankoma's unique tableware around the world have successfully been produced only on our colored earthenware clay. The first to introduce colored dinnerware on the market in the 1940's was one of the basic reasons John Frank was presented the award "1972 Marketing Man of the Year."

Grace Lee and The Late John Frank exemplify true American determination and the Free Enterprise System. They started with only a dream, and through hard work created one of America's most unique potteries recognized the world over. 1971 they were named, "National Small Businessman of the Year" and personally recognized by the President of the United States for their accomplishments. The business has continued since Mr. Frank's death, November 10, 1973, in the same tradition by their daughter Joniece Frank and a trained, dedicated staff.



Grace Lee and The Late John Frank  
(pictured January 1973)

"If art is good, it will live" was a statement made by John Frank, which has been proven many times over. One piece has been produced since the first studio pottery 48 years ago; others almost as long and still remains in demand. Yet Frankoma Pottery constantly creates new designs. Frankoma is versatile. Bake beans in a flower pot or arrange flowers in a gravy boat. What fun you can have by serving salad in a cornucopia. Your imagination creates its use.

Frankoma with its modern plant and latest equipment has been able to maintain its very popular price range in the face of higher materials, taxes and labor costs, and the influx of foreign goods; yet it maintains the original concept that made it accepted as a standard of fine "Pottery"—every piece should be both useful and beautiful and be a contribution to both art and ceramics. "Frankoma" which includes its Frankoma Family of Employees and Accounts, and the family of John Frank will continue to do just that, so that every piece will add to your daily pleasure of casual living.

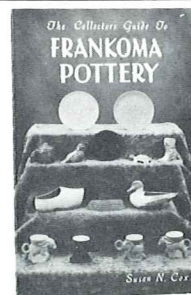


### "CLAY IN THE MASTER'S HANDS"

The STORY of John Frank and Frankoma Pottery.

PRICE — \$6.95

The story of John Frank and the legend he became. Affectionately told by his eldest daughter, Donna Frank.



### "THE COLLECTORS GUIDE TO FRANKOMA POTTERY"

\$9.95 The Collectors Guide

2.00 Price Guide and Supplement

.75 postage/handling

Cal. res. add 6% sales tax

This recently published book written by Susan N. Cox is a must for the collector of Frankoma Pottery. To order write to:

SUSAN N. COX  
800 Murray Drive  
El Cajon, California 92020

# FRANKOMA

## CHRISTMAS MEMORIAL PLATES

AMERICA'S FIRST ANNUAL LIMITED EDITION CHRISTMAS PLATE SERIES



1965  
"Good Will Towards Men"



1966  
"Bethlehem Shepherds"



1967  
"Gifts for The Christ Child"



1968  
"Flight Into Egypt"



1969  
"Laid in a Manger"



1970  
"King of Kings"



1971  
"No Room in the Inn"



1972  
"Seeking The Christ Child"



1973  
"The Annunciation"



1974  
"She Loved and Cared"



1980  
"Unto us a Child is Born"



1979  
"The Star of Hope"



1978  
"All Nature Rejoiced"



1977  
"Birth of Eternal Life"



1976  
"The Gift of Love"



1975  
"Peace on Earth"



1981

"O, COME LET US ADORE HIM"

Boxed  
\$12.00

In 1965 The Late John Frank, Artist and Founder of Frankoma Pottery created the first annual Christmas plate made in America. They were inspired by the Christmas story and the fact that the life of Christ has been the inspiration of more "Art" in all of its mediums, than any one subject in the history of the world. A self imposed demand was that every plate should have a scriptural background for each years renderings. No other pottery to our knowledge has attempted such a religious annual commemorative plate in the history of America.

They are done in low bas-relief, with sharp enough detail, and sufficient good modeling as to make each plate a treasured piece of **sculpture**, as well as tell a story relative to Christmas time and the life of Christ. They are done in a semi-translucent "Della Robbia" white glaze. The plate is 8½ inches in diameter; the master mold was signed by Mr. Frank through 1973. Beginning in 1974 the master mold is signed by his daughter Joniece Frank; all plates are copyrighted. The production is limited to those that are actually sold up till about the 10th of December. The master mold is destroyed on Christmas eve, and there are none made after that. The edition is limited to that year.

These plates are introduced in early spring and only sold through Frankoma Pottery dealers, for it was created as a bonus for their participation and selling Frankoma Pottery. We have tried to keep the price very reasonable so that more people can afford to own them, collect and enjoy them.

We hope they will be a spiritual inspiration and reminder of the lasting value of the scriptures, and a blessing to all those who possess them.

PAST ISSUES NO LONGER AVAILABLE FROM FACTORY

## CREATIONS BY GRACE LEE

Grace Lee Frank Smith known for her artistic talents in poetry, floral designs and possibly best known for her inspiration and guidance of her late husband—John Frank—in his design and artwork of Frankoma Pottery: now enters the field of design and sculpture as an artist in her own right.



GRACE LEE



"THE GRACE MADONNA" ©  
© F.P. 1977 15.00

The Madonna has been a favorite subject of artists throughout the centuries. In the "Madonna Plates" one can see The Simplicity of the Western Plains Heritage of the artist, together with the refined beautiful influence of the great Renaissance.



"MADONNA OF LOVE" ©  
© F.P. 1978 15.00  
Items are Boxed

"MADONNA OF LOVE" and "THE GRACE MADONNA" are signed by the artist, NUMBERED IN ROMAN NUMERALS, Limited Edition Plates. They are presented to you in the unique Hand Stained Rubbed Bisque Finish. 8½" Plate, Foot drilled for hanging.



4.00  
108—MOTHER BIRD



4.00  
109—BABY BIRD

BIRDS — AVAILABLE IN ALL COLORS

## "TEEN-AGERS OF THE BIBLE"

Teen-Ager  
Plate is Boxed



10.00

1981

"JOSEPH THE DREAMER"

ONE OF THE MOST UNIQUE "COLLECTABLE PLATES" PRODUCED IN ANY COUNTRY TODAY. Not in 2,000 years since Christ have "teen-agers" of the Bible as such been featured in either Art or Literature to our knowledge. — Until we started this series of plates.

We produce one plate each year, featuring different teen-agers, for ten years. The mold is destroyed Christmas eve. The plate is 7" in diameter: color — Desert Gold; Foot drilled for hanging; The master mold is signed by the artist; Mr. Frank signed the first one. Beginning in 1974, the master mold is signed by his daughter, Joniece Frank, and copyrighted. The late Mr. Frank loved teen-agers and young people and through his interest in them did he conceive this idea. It will prove to be one of the greatest collector items ever produced. A great gift for young people and a treasure for all ages.



1973

"Jesus The Carpenter"



1980

"Ruth the Devoted"

PAST ISSUES NO LONGER AVAILABLE FROM FACTORY.



1974

"David The Musician"



1975

"Jonathan The Archer"



1976

"Dorcas The Seamstress"



1977

"Peter The Fisherman"



1978

"Martha The Homemaker"



1979

"Daniel The Courageous"

# MORE NEW FRANKOMA BANKS



BANKS  
AVAILABLE  
IN ALL  
9 COLORS



410 Set 22.50



412 Set 32.00



413 Set 12.00



411 Set 29.00

B  
A  
T  
H

S  
E  
T  
S

SOUGHT AFTER IN HOME DECOR — boxed sets in 8 colors.  
No Terra Cotta

## Appropriate Containers for Flower Arrangements and Planters

F30A—5½" PITCHER 6.00  
F30B—7" BOWL 3.00

40A—4" PITCHER 4.00  
40B—5" BOWL 3.00

NOT AVAILABLE  
IN FLAME



31—6" BUD VASE  
3.00



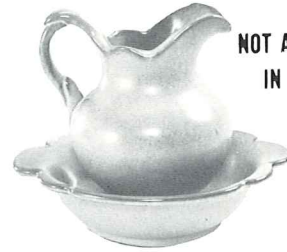
20—6" BUD VASE  
3.50



28—6½" BUD VASE  
3.00



38—6" OCTANGLE VASE  
3.50



F30AB—PITCHER & BOWL SET  
9.00



40AB—PITCHER & BOWL SET  
7.00



26LC—4½"—6 OZ.  
TUMBLER VASE  
3.00



4SC—5" CUP-BOWL  
Not Available in  
Terra Cotta  
3.50



4M—4½"—18 OZ.  
MUG  
4.00



5M—5½"—16 OZ.  
MUG  
4.00



M2—6"—18 OZ.  
MUG  
4.00



T7—3½" COCONUT PLANTER  
2.50



F33—3¾x7" FLUTED PLANTER  
5.00



198  
7½" FAN VASE  
5.50



23A—6" SQ. PEDESTALLED  
VASE  
6.00



F52—7" PEDESTALLED  
URN  
6.00



37—4" HEXAGONAL PLANTER  
3.00



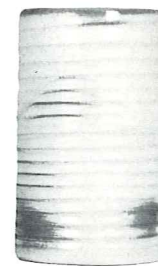
65—6½" HEXAGONAL  
VASE  
6.00



64—9½" OCTAGONAL  
VASE  
7.00



272—4" RINGED  
CYLINDER VASE  
3.00



172—6½" RINGED  
CYLINDER VASE  
4.25



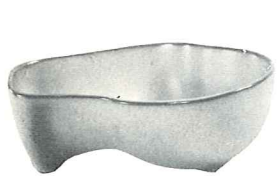
72—10" RINGED CYLINDER  
VASE  
6.00

THIS PAGE AVAILABLE IN ALL COLORS — EXCEPT WHERE NOTED. Add 50% for Flame.

SEE PAGE #27 FOR COLOR CHART.

SIZES ARE PROPORTIONATE BUT MAY VARY SLIGHTLY.

### Appropriate Containers for Flower Arrangements and Planters



4N-8" BOWL  
4.25



212-8" ROUND BOWL  
5.00



4XL-7" BOWL  
3.50



6N-7 1/2" BOWL  
4.25



224-8" ROUND BOWL  
6.00



35-4x6" FOOTED PLANTER  
3.50



201-9" BOWL  
4.25



22A-5" FOOTED VASE  
4.25



22-7" FOOTED ROUND VASE  
6.00



218-12" SCALLOPED BOWL  
7.00



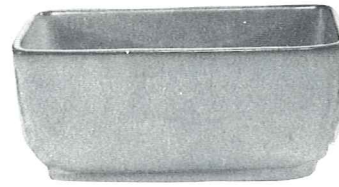
235-6" FLOWER ARRANGER  
5.00



F29-6" DRAPERY VASE  
5.00



234-7 1/2" FREEFORM BOWL  
5.50



14-8" PLANTER  
6.00



17-8 x 3" PLANTER  
6.00



913-9" DUTCH SHOE PLANTER  
5.00



228-8" SWAN PLANTER  
6.00



208A-9 1/2" MALLARD PLANTER  
6.00



208-12" MALLARD PLANTER 9.00



390-6" ELEPHANT PLANTER  
5.00



391-6" PIG PLANTER  
5.00



174  
3" THUMB PRINT  
PLANTER  
2.50



173  
5" OCTAGONAL  
PLANTER  
4.00



B3-4 1/2" CORK BARK PLANTER  
4.25



433-BOOT BOOKENDS 18.00 PR.  
Not Available in Terra Cotta.



4.00  
133-6 1/2" BOOT VASE



134-4" BOOT 2.50



392-DOG PLANTER 6.50



393-KITTEN PLANTER 6.50

THIS PAGE AVAILABLE IN ALL COLORS EXCEPT WHERE NOTED

SIZES ARE PROPORTIONATE BUT MAY VARY SLIGHTLY.

SEE PAGE #27 FOR COLOR CHART

### "TOBY MUGS"

Created for every day use or special occasions. Perfect for serving beverages or as an unusual floral container.



604  
IRISH MUG

4.00



4.00  
603—GOLF PLAYER MUG



4.00



4.00



4.00

600—UNCLE SAM MUG 601—COWBOY MUG 602—BASEBALL PLAYER

Available in Green, Gold, White, Flame & Terra Cotta Only



302—6" CANDLE VASE  
4.25



222—12" CORNUCOPIA  
9.00

NOT AVAILABLE  
IN FLAME.



59—CANTEEN W/HANGER  
Not Available  
in Terra Cotta.  
5.00



57—7" CORNUCOPIA  
5.00



71—10" LEAF HANDLED VASE  
15.00



8.50  
70-A—7" RINGED JARDINIERE



6.00  
70-B—5 1/2" RINGED  
JARDINIERE



7.00  
A8—8 1/2" JARDINIERE  
Not Available in Flame



6.00  
A7—7" JARDINIERE



4.25  
A6—6" JARDINIERE

### HONEY JUGS — SYRUP PITCHERS — FLOWER CONTAINERS



803—HONEY JAR  
W/LID  
4.25



838—10 OZ. PITCHER  
3.00



3.50  
831—16 OZ. PITCHER



3.50  
833—24 OZ. PITCHER



835—24 OZ. PITCHER  
3.50



8—24 OZ. PITCHER  
3.50

HONEY JUGS Not Available in Terra Cotta.

### ASH TRAYS



458—7" THREE SIDED  
5.00



3.00  
474—4" ROUND ASH TRAY



3.00  
469—4 1/2" SAFETY ASH TRAY

Small containers perfect for miniature or dried arrangements.



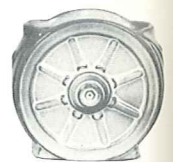
5DB—3.00



BP—2.50



6B0—3.00



94B0—3.00



4Y—3.00



504—2.50



X0—1.50



# Accessories for All Dinner Ware Patterns

**"MUGS"** for coffee, tea, milk, chocolate, soup, soda. YOU NAME IT! (see page #27 for color chart) — 8 to 11 Oz.



C1



C2



C3



C4



C5



C6



C7



C9



C10



C12



C13

Mugs 3.00

Flame 4.50

MUGS boxed 4 to a box

\* \* \* \* \*

Available in ALL colors

Except Terra Cotta

**Road Runner Mug**

Colors: Green, Gold, White, Flame; ONLY. Flame 5.25



C1R 3.50

**INDIVIDUAL — MINIATURE — SUGAR & CREAMERS**



553—Creamer—3.00  
504—Sugar—2.50



5DB—6 Oz. Sugar 3.00

5DA—6 Oz. Creamer 3.00



1T—Toothpick Holder 2.50



1C—3 Oz. 2.50



5CC—5 Oz. 2.50



26DC—3 Oz. 3.00



6J—2 Cup Teapot 6.00



6T—6 Cup Teapot 8.50



26D—1 Qt. Pitcher 6.00



81—1 Qt. Pitcher 6.00



80—2 Qt. Pitcher 8.50



5LC—6 Oz. Juice 3.00



5L—12 Oz. Tumbler 3.50



26LC—6 Oz. Tumbler 3.00



4SC—11 Oz. Soup Cup 3.50



M2—18 Oz. Stein 4.00



4Y—6" Spoon Holder 3.00



463—4" Arrowhead 2.00



512—4" Leaf 2.00

MINIATURES: APPROPRIATE FOR PIN TRAYS, NUT CUPS, ASH TRAYS, etc.



513—4" Clover 2.00



477—4" Dogwood 2.00



170—Turtle Paper Weight 2.50

ABOVE ITEMS AVAILABLE IN 8 COLORS — ADD 50% FOR FLAME  
NO TERRA COTTA

SIZES ARE PROPORTIONATE BUT MAY VARY SLIGHTLY

# Accessories for All Dinner Ware Patterns

W5—8.00  
W1—6.00  
W2—7.00  
814—6.00  
815—6.00  
816—6.00

AVAILABLE IN ALL COLORS  
W5—7" OWL WIND BELL W1—3½" WIND BELL W2—5" WIND BELL  
814—6" TABLE BELL 815—7" TABLE BELL 816—6" TABLE BELL

## 6" Felted Trivets — Hot Plates

BTR—Butterfly 3.00  
94TR—Rooster 3.00  
3TR—Spanish Iron 3.00  
OTR—Owl 3.00  
Available in all Colors

94TRH — Horse Shoe 3.00  
OK3—5 Civilized Tribes Trivet 3.00  
7TR—Cherokee Alphabet 3.00  
Available only in Gold, Green, White & Flame

## SPECIAL STATE & SOUVENIR ITEMS

Available only in Desert Gold, White Sand, Prairie Green and Flame.  
Add 50% for Flame

K-1—KANSAS ASH TRAY — 3.00  
461—3½" OKLAHOMA ASH TRAY — 2.50  
459—4½" TEXAS ASH TRAY — 2.50

NOTE: 461 & 459 AVAILABLE IN ALL COLORS

8½" STATE PLATES—PLATES FOOT DRILLED FOR HANGING

OK-1—OKLAHOMA PLATE 4.00  
K-3—KANSAS STATE PLATE 4.00  
TEX-1—TEXAS STATE PLATE 4.00

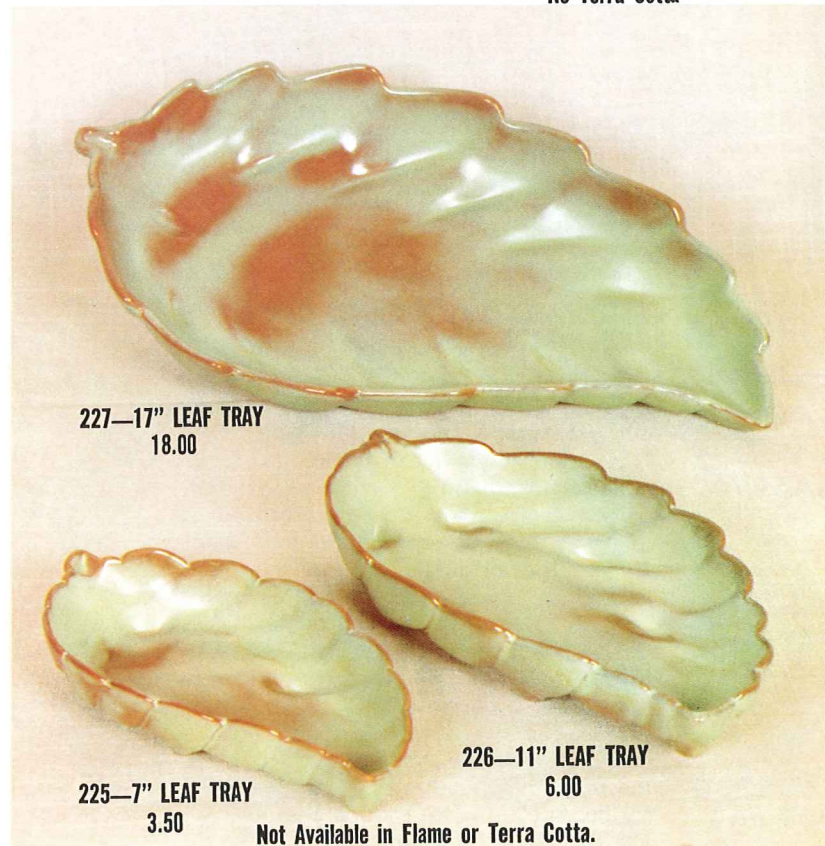
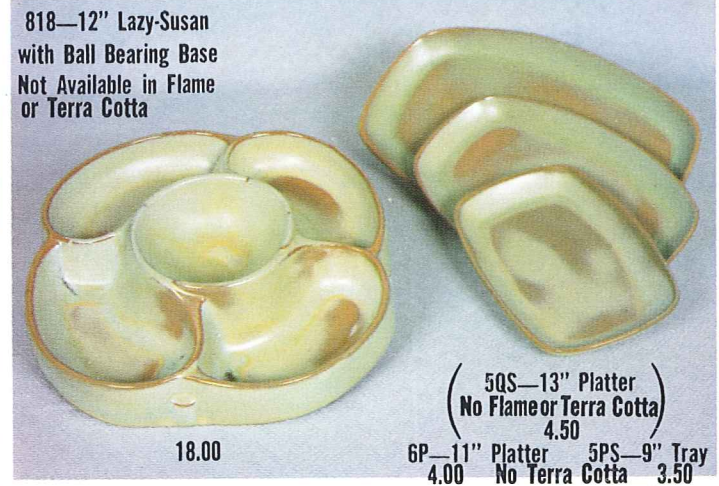
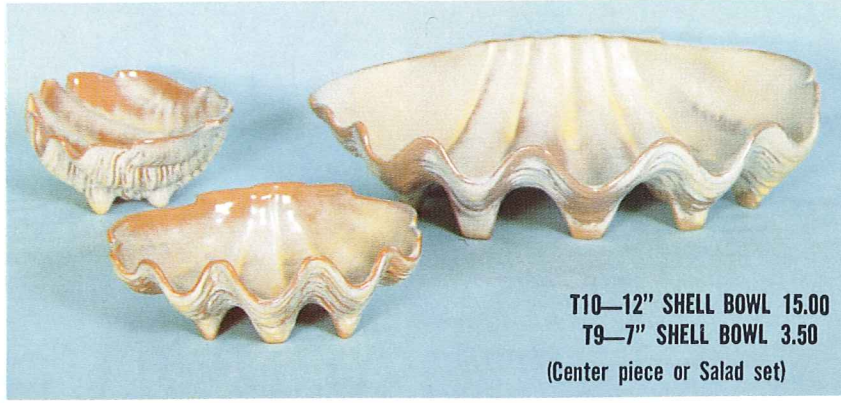
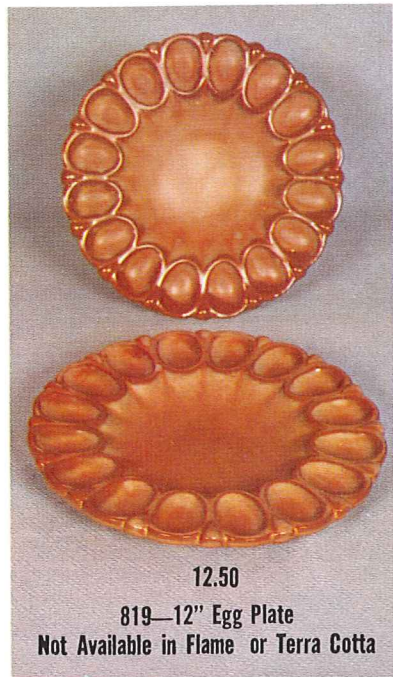
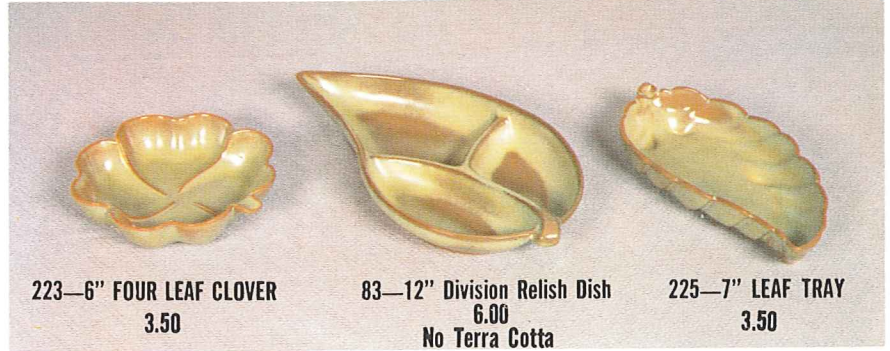
466R—ROAD RUNNER ASH TRAY — 3.00  
CIR—ROAD RUNNER 12 OZ. MUG — 3.50  
OKIE MUG 12 OZ. — 3.50

MO-1 4.00 MISSOURI STATE PLATE  
WR-1—WILL ROGERS PLATE 7.50  
7FS—CHEROKEE ALPHABET PLATE 4.00

1CL—DEMITASSE CRAWFISH CUP 2.50  
M1L—CRAWFISH 15 OZ. STEIN 4.50  
458L—CRAWFISH ASH TRAY 6.00  
LTR LOUISIANA TRIVET 3.00  
LCTR—CRAWFISH TRIVET 3.00  
RGTR—6" ROYAL GORGE TRIVET 3.00  
K2—KANSAS TRIVET 3.00

**TRAYS SUITABLE FOR RELISH, NUTS, JELLIES, SALADS AND CANDY**

AVAILABLE IN ALL COLORS (Except where noted).



# PLATTER STYLE DINING

## IS

**Casual — Informal — Comfortable**

Try platter style dining once, and never return to  
Dining in the Round



### 6PLS SET 36-PIECE SERVICE SET FOR EIGHT Boxed 105.00

- |                   |                    |
|-------------------|--------------------|
| 8-C3—Mugs         | 1-5QS—13" Platter  |
| 8-6P—11" Platters | 1-5DA—Creamer      |
| 8-5PS—9" Platters | 1-5DB—Sugar        |
| 8-14-oz Bowls     | 1-5NS—9" Veg. Bowl |

**6PLS Set Not Available in Terra Cotta**

### 5QSLs SET 36-PIECE SERVICE SET FOR EIGHT Boxed 113.00

- |                    |                    |
|--------------------|--------------------|
| 8-C3—Mugs          | 1-5Q—13" Platter   |
| 8-5QS—13" Platters | 1-5DA—Creamer      |
| 8-5PS—9" Platters  | 1-5DB—Sugar        |
| 8-14-oz. Bowls     | 1-5NS—9" Veg. Bowl |

**5QSLs Set Not Available in Flame or Terra Cotta**

## fine ceramic sculpture for today's home

**INDIAN MAIDEN — #101**

12" Tall 7.50

**COYOTE — #102**

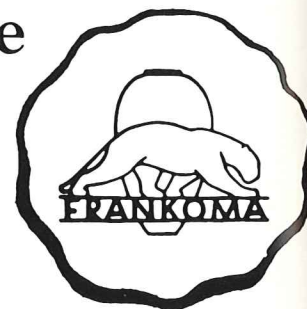
12½" Tall 7.50

**MARE AND COLT — #103**

12" Tall 7.50

**SQUIRREL — #105**

6" Tall 5.00



These pieces available

**ONLY in:**

Rubbed Bisque

### REPRODUCTIONS OF WILLARD STONE'S WOOD CARVINGS

Today's homes are "confines around our treasures", no matter what they "cost". Only a few can afford the "originals" of masters, but even the meagerest of homes are entitled to be enriched by living with good reproductions of them. All of the originals of the items we reproduce, are owned by Frankoma.

The wood sculpture of **WILLARD STONE**, a Cherokee, is a part of most museums, especially of the Southwest. His unique down to earth and humanistic style has brought him into many of the leading art galleries in America. We try to faithfully reproduce the few we are privileged to own.

# INFLATION FIGHTER SPECIAL

## 12 PIECE BREAKFAST SET (Boxed)

B - SET

32.00

4 - 5PS PLATTERS

4 - C3 MUGS

4 - 5XS 10 OZ. BOWLS



## SAVINGS FROM OPEN STOCK PRICE



## 12 PIECE LUNCHEON SET (Boxed)

L - SET

35.00

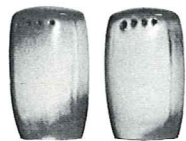
4 - 6P PLATTERS

4 - C3 MUGS

4 - 5X 14 OZ. BOWLS



5V—2 QT. BAKER/BEAN POT 8.50  
5V/W—BAKER/W WARMER SET 15.00



5H—SALT & PEPPER 4.25

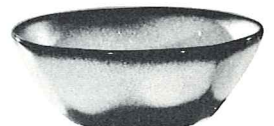
ACCESSORIES AVAILABLE



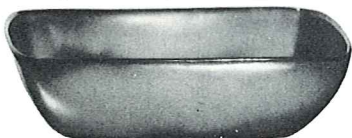
5DB—6 OZ. SUGAR 3.00



5DA—6 OZ. CREAMER 3.00



5XL—20 OZ. BOWL 3.50  
5X—14 OZ. CEREAL 3.00  
5XS—9 OZ. FRUIT 2.50



5NS—9" VEGETABLE 4.25



6S—TWO SPOUT GRAVY 6.00



6J—2 CUP TEAPOT 6.00  
6T—6 CUP TEAPOT 8.50



5L—12 OZ. TUMBLER 3.50



5LC—6 OZ. JUICE 3.00

AVAILABLE IN ALL COLORS EXCEPT TERRA COTTA — ADD 50% FOR FLAME

80 SET



80—8 QT. PITCHER 8.50 5L—12 OZ. TUMBLER 3.50

C12—7 OZ. MUG 3.00



82 SET (82—6 CUP CARAFE & LID 82W—WARMER) 18.00

# Gift Sets

5D SET



5D—3 QT. PITCHER 10.00 5M—16 OZ. MUG 4.00



6T—6 CUP TEAPOT 8.50 5DA—6 OZ. CREAMER 3.00  
WA3—6" WARMER W/CANDLE 4.50 5DB—6 OZ. SUGAR 3.00



6S—TWO-SPOUT GRAVY 6.00  
5PS—9" PLATTER-TRAY 3.50  
6S/ST—TWO-SPOUT GRAVY/W TRAY 9.50



SOUP AND SANDWICH SET  
4SC—11 OZ. SOUP CUP 3.50  
6P—11" PLATTER-TRAY 4.00

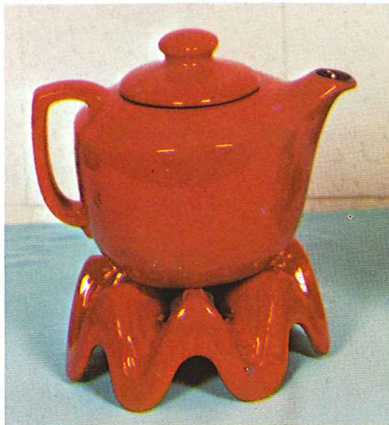


COFFEE AND DESSERT SET  
5PS—9" PLATTER-TRAY 3.50  
C2—10 OZ. MUG 3.00  
(or choose your own style  
Mug — See Pg. 9)



6J SET 15.00

6J—2 CUP TEAPOT 6.00  
504—INDIVIDUAL SUGAR 2.50  
553—INDIVIDUAL CREAM 3.00  
6P—11" PLATTER TRAY 4.00



5TL/W—TEAPOT & WARMER SET 18.50  
5TL—12-CUP TEAPOT 12.00  
WA1—WARMER 7.00



26 SET— 50.00  
RINGED CANNISTER SET  
26F—17.00  
26S—13.00  
26C—11.00  
26T—10.00  
26F—FLOUR, COOKIES, CORN MEAL 26S—SUGAR  
26C—COFFEE 26T—TEA



26G—SUGAR/GREASE 8.50 26H—SALT & PEPPER 6.00  
4-PIECE SET/BOXED 14.50



26DC SET 22.00  
26D—1 QT. PITCHER 6.00 26DC—3 OZ. JUICE 3.00  
91—TRAY 4.25



5LC SET 22.00  
81—1 QT. PITCHER 6.00 5LC—6 OZ. JUICE 3.00  
91—TRAY 4.25

# Gourmet Items



8.50 4Y—2 QT. BAKER/BEAN POT 3.00  
 4V—2 QT. BAKER/BEAN POT 12.00  
 4V/W—BAKER & WARMER SET 15.00 4W—3 QT. BAKER/BEAN POT 18.50  
 4W/W—BAKER & WARMER SET



6.00 6U—18 OZ. BAKER 8.50  
 6VS—1½ QT. BAKER 12.00  
 6VS/W BAKER & WARMER SET 15.00 6V—2½ QT. BAKER 18.50  
 6V/W BAKER & WARMER SET



243—BONE DISH 2.50

244—INDIVIDUAL VEGETABLE BOWL 2.50

242—CORN DISH 2.50

XQ—3 OZ. SINGLE SERVING BOWL 1.50



172—WITHOUT SPOONS 4.25



81—WITHOUT SPOONS 6.00



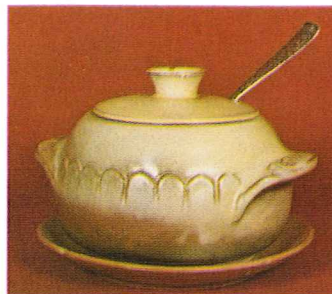
72 SET

PASTA CANNISTER SET 21.00



5P—

(5P—17" PLATTER NOT AVAILABLE IN FLAME) 15.00  
 5Q—13" PLATTER 7.00 5QD—13" DIVIDED BOWL 7.00



245—2 QT. SOUP TUREEN 8.50  
 245/W—TUREEN W/WARMER 15.00  
 245/P—TUREEN W/PLATE 13.00



246—3 QT. SOUP TUREEN 12.00  
 246/W—TUREEN W/WARMER 18.50  
 246/P—TUREEN W/PLATE 16.50  
 247—SOUP LADLE—(NEW) 5.00

# Westwind PATTERN

AVAILABLE IN: Robin Egg Blue, Prairie Green, Autumn Yellow and White Sand:

Black &amp; White; Flame &amp; White.



White Sand



Autumn Yellow



Prairie Green



Flame &amp; White



Black &amp; White



Robin Egg Blue

**6LS-45 PC. SERVICE SET FOR EIGHT, BOXED**

- |                   |               |                   |
|-------------------|---------------|-------------------|
| *8 - Cups         | <b>125.00</b> | 1 - 13" Platter   |
| 8 - Saucers       |               | *1 - Creamer      |
| *8 - 14 Oz. Bowls |               | *1 - Sugar        |
| 8 - 7" Plates     |               | *1 - Sugar Lid    |
| 8 - 10" Plates    |               | *1 - Serving Bowl |

**Flame/White 150.00****6TS-20 PC. STARTER SET FOR FOUR, BOXED**

- |                              |              |
|------------------------------|--------------|
| *4 - Cups                    | <b>55.00</b> |
| 4 - Saucers                  |              |
| 4 - 7" B & B Plates          |              |
| 4 - 10" Plates               |              |
| *4 - 14 oz. Chili-Soup Bowls |              |

**Flame/White 65.00**

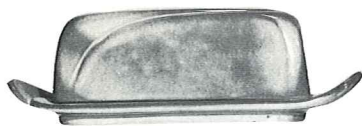
Set your table with these lovely color combinations: Black and White or Flame and White. They create new exciting table decor without being repetitious. The standard sets come with cup, bowl, sugar and creamer, serving bowl in black or flame (as depicted with asterisk\*) and dinner plate, salad plate, saucer, platter in white. Use your own creative imagination when ordering other accessory pieces. Truly a new concept in eating fun. "Westwind", with its basic simple lines, permits freedom in expression of personality which is so important in smart contemporary homes. You'll LOVE "Westwind" — and, of course, it is all ovenproof and dish-washer proof.

SIMPLICITY in its truest form — that's "Westwind." The carefully broken line of the shallow coupe shape is the key to the pattern. The simple unbroken line of the cup handle, with its broad thumb rest, combines grace and security.

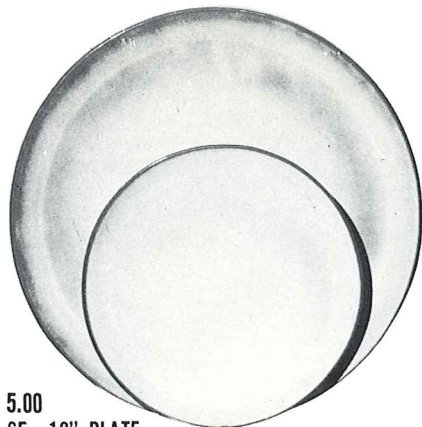
The large and small open bakers have rolled rims for safety and ease of handling. Cleaning is no task. Much care is exercised in making these "easy-grip" knobs on the lids. This oven-to-table pottery is truly the gourmet's delight.

The homemaker today appreciates the warm, cordial earthen colors in this unique pottery. Its waxy textures are so lovely to the touch. Such tableware should be selected for its artistic qualities as well as its serviceability. "Westwind," with its basic simple lines, permits freedom in expression of personality which is so important in smart contemporary homes. You'll LOVE "Westwind"—and, of course, it can be used in the microwave, oven and dishwasher.





\*4K—BUTTER DISH 6.00



5.00  
6F—10" PLATE  
6G—7" PLATE 3.00



\*6B—SUGAR WITH LID 4.50

\*6AB—CREAM & SUGAR SET 7.00



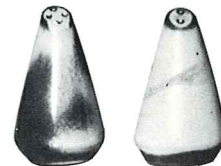
\*6A—9 OZ. CREAMER 3.00



\*6U—18 OZ. BAKER FOR TWO  
A COVERED CANDY DISH 6.00



3.00  
\* \*6C—CUP  
6E—5" WELLED SAUCER 2.50



\*6H—SALT & PEPPER 4.25



\*6VS—1½ QT. BAKER 8.50  
6VS/W BAKER & WARMER SET 15.00



\*5LC—6 OZ. JUICE 3.00



\*5L—12 OZ. TUMBLER 3.50



\*81—1 QT. PITCHER 6.00



\*244—INDIVIDUAL VEGETABLE BOWL 2.50



\*6V—2½ QT. BAKER 12.00  
6V/W BAKER & WARMER SET 18.50



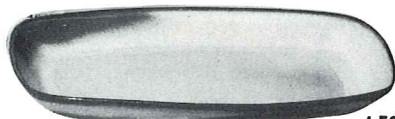
\*6T—6 CUP TEAPOT 8.50



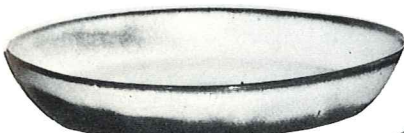
\*80—2 QT. PITCHER 8.50



\*6J—2 CUP TEAPOT 6.00



4.50  
5QS—13" STEAK PLATE (SHALLOW PLATTER)  
\*6P—11" STEAK PLATE 4.00  
\*5PS—9" TRAY 3.50



\*91—10" BAKING DISH 4.25



\*XO—3 OZ. SINGLE SERVING BOWL 1.50



\*6S—2 SPOUT GRAVY 6.00



\*242 CORN DISH 2.50



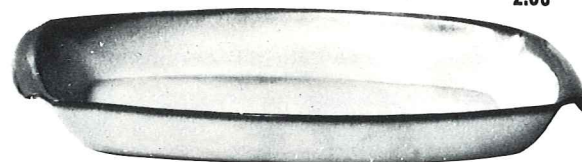
\*243—BONE DISH—6½" 2.50



\*6N—1 QT. BOWL 4.25

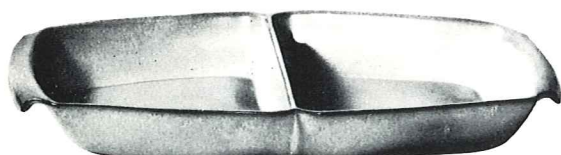


\* \*6X—14 OZ. CHILI SOUP 3.00  
\* \*6XS—10 OZ. FRUIT 2.50



5P—17" DEEP PLATTER 15.00

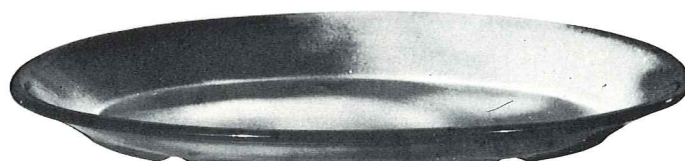
\*5Q—13" DEEP PLATTER 7.00



\*5QD—13" DIVIDED BOWL 7.00



\*BP—6 OZ. BEAN POT OR CUSTARD 2.50



\*TP—17" OVAL PLATTER 15.00

THIS PAGE AVAILABLE IN PRAIRIE GREEN, ROBIN EGG BLUE, AUTUMN YELLOW AND WHITE SAND EXCEPT WHERE NOTED

\*AVAILABLE IN ALL COLORS \* \*AVAILABLE IN BLACK & FLAME ALSO. — ADD 50% FOR FLAME SIZES ARE APPROXIMATE AND MAY VARY SLIGHTLY. DINNERWARE NOT AVAILABLE IN TERRA COTTA

# LAZYBONES Pattern

AVAILABLE IN: Brown Satin, Desert Gold, Prairie Green, Robin Egg Blue



BROWN SATIN



DESERT GOLD



PRAIRIE GREEN



ROBIN EGG BLUE

**4LS—45 PC. SERVICE SET FOR EIGHT, BOXED 125.00**

- |                |                |
|----------------|----------------|
| 8—Cups         | 1—13" Platter  |
| 8—Saucers      | 1—Creamer      |
| 8—14 Oz. Bowls | 1—Sugar        |
| 8—7" Plates    | 1—Sugar Lid    |
| 8—10" Plates   | 1—Serving Bowl |

**4TS—20 PC. STARTER SET FOR FOUR, BOXED 55.00**

- |                           |
|---------------------------|
| 4—Cups                    |
| 4—Saucers                 |
| 4—7" B & B Plates         |
| 4—10" Plates              |
| 4—14 Oz. Chili-Soup Bowls |

Our American homes are being designed and built so that home makers can take advantage of the many modern conveniences, yet develop their own personalities in color and styling.

The furnishings for these contemporary homes are practical and simplified. They must be selected carefully to preserve a cordial atmosphere, which we all wish for our family and friends.

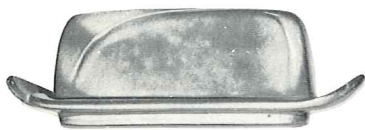
Frankoma was sensitive to these trends when this new dinnerware was being designed. The atmosphere surrounding LAZYBONES is relaxing, for you are influenced by its free flowing sculptured lines. As you accept the invitation to handle and caress each piece, you will love the way

they fit the contour of your hands, for immediately they become a part of you.

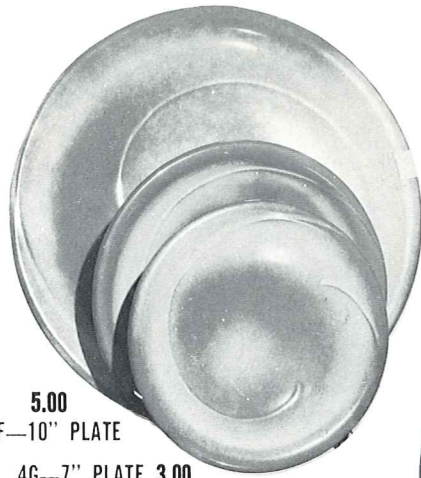
Food cooked in Lazybones can go from the oven to the table—and there are so many uses for each piece. They are designed to serve!

Notice the array of Frankoma's colors. They are the gourmet's delight, for they all compliment your food and share in making every meal an occasion. The shapes themselves are both practical and beautiful.

When you set your table with Lazybones, you are set to relax, and enjoy your share of casual living. It will be the "Talk of the Table" with your family and friends.



\*4K—BUTTER DISH  
6.00



5.00  
4F—10" PLATE  
4G—7" PLATE 3.00  
4E—5" SAUCER 2.50



\*5CC—5 OZ. TEACUP — 2.50



\*4X—14 OZ. CEREAL  
3.00



\*5L—12 OZ.  
TUMBLER  
3.50



\*5LC—6 OZ.  
JUICE  
3.00



4C—CUP  
3.00



\*4Y—6" SPOON HOLDER  
3.00



\*4H—SALT & PEPPER  
4.25



\*4SC—11 OZ. SOUP CUP  
3.50



8.50 \*4V—2 QT. BAKER/BEAN POT  
15.00 \*4V/W—BAKER/W WARMER SET



4A—8 OZ. CREAMER  
3.00



4B—SUGAR WITH LID  
4.50



\*4M—18 OZ. MUG  
4.00

4AB—CREAM & SUGAR SET  
7.00



\*4N—24 OZ. VEGETABLE  
4.25



\*4P—13" PLATTER  
7.00



\*M2—18 OZ. STEIN  
4.00



\*224—8" ROUND BOWL  
6.00



\*4W—3 QT. BAKER/BEAN POT — 12.00  
\*4W/W—BAKER/W WARMER SET — 18.50



\*4QD—11" DIVIDED BOWL  
7.00



\*201—9" BOWL — 4.25



\*242  
CORN DISH  
2.50



\*XO—3 OZ.  
SINGLE SERVING BOWL  
1.50



\*BP—6 OZ. BEAN POT  
OR CUSTARD  
2.50



\*4XL—24 OZ. SALAD  
OR GUMBO  
3.50



\*243—BONE DISH—6½"  
2.50



\*244—INDIVIDUAL  
VEGETABLE BOWL—2.50



\*4D—2 QT. PITCHER  
8.50

THIS PAGE AVAILABLE IN PRAIRIE GREEN, DESERT GOLD, BROWN SATIN AND ROBIN EGG BLUE, EXCEPT WHERE NOTED\*

\*AVAILABLE IN ALL COLORS — ADD 50% FOR FLAME

Dinnerware Not Available in Terra Cotta.

SIZES ARE APPROXIMATE AND MAY VARY SLIGHTLY.

# WAGON WHEELS Pattern

AVAILABLE IN: Desert Gold and Prairie Green.



PRAIRIE GREEN

**94LS—45 PC. SERVICE SET FOR EIGHT, BOXED 125.00**

- |                 |                |
|-----------------|----------------|
| 8 -Cups         | 1-13" Platter  |
| 8 -Saucers      | 1-Creamer      |
| 8--14 Oz. Bowls | 1-Sugar        |
| 8-7" Plates     | 1-Sugar Lid    |
| 8-10" Plates    | 1-Serving Bowl |



DESERT GOLD

**94TS—20 PC. STARTER SET FOR FOUR, BOXED 55.00**

- |                           |
|---------------------------|
| 4-Cups                    |
| 4-Saucers                 |
| 4-7" B & B Plates         |
| 4-10" Plates              |
| 4-14 Oz. Chili-Soup Bowls |

THE ROMANCE OF THE WEST lives on with our WAGON WHEEL Pottery! The pitchers are quaint and practical. The cup is the hub of a wheel, and the "good luck" horseshoe makes the handles for the baker. There are bands of cattle brands on the platters and bowls. The whole set is an application of the fine designs one can find on any ranch.

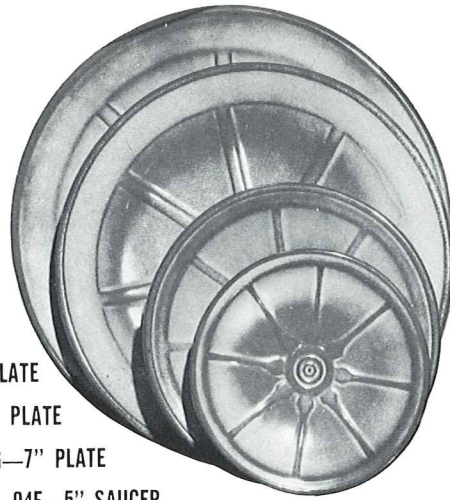
A most colorful part of the history of the Southwest is the cattle industry, and the rancher's "coat of arms" is his "cattle-brand." The covered wagon, "wagon wheels," horses, the cowboys, cattle, the "little dogies," and above all, the "cattle-brand" are symbols of this natural industry.

Many of these brands are fine designs, and most of them have a definite meaning. Some are the initials of the owner, others may refer to hills on the ranch, the number of acres he owns, the number in the family, his monogram, key, a hat, or any one of a thousand items of interest. Each brand is usually registered in the county in which it is used.

We are proud to take this opportunity to eulogize these pioneers of the Southwest, and include a number of these brands in decorating some of the pieces of our WAGON WHEEL set. Every piece can be used in the microwave, oven and dishwasher.



167—3½" MINIATURE HORSESHOE  
2.50



5.00—94FL—10" PLATE

3.50—94F—9" PLATE

3.00—94G—7" PLATE

2.50—94E—5" SAUCER



94M—16 OZ. MUG  
4.00



94B—SUGAR WITH LID  
4.50



3.00

94A—8 OZ. CREAMER  
94AB—CREAM & SUGAR SET—7.00



\*243—BONE DISH—6½"  
2.50



94H—SALT & PEPPER  
4.25



244—INDIVIDUAL VEGETABLE BOWL  
2.50



94XL—20 OZ. BOWL  
3.50



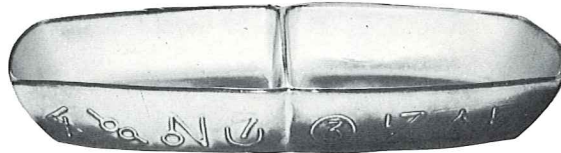
94X—14 OZ. CEREAL  
3.00



94XO—6 OZ. DESSERT  
2.50



8.50—94V—2 QT. BAKER/BEAN POT  
15.00—94V/W—BAKER W/WARMER SET



94QD—13" DIVIDED BOWL—7.00



94C—5 OZ. CUP  
3.00



94L—12 OZ. TUMBLER  
3.50



12.00—94W—3 QT BAKER/BEAN POT  
18.50—94W/W—BAKER/W WARMER SET



94Q—13" PLATTER—7.00



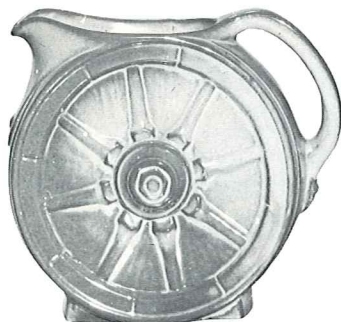
94N—1 QT. VEGETABLE BOWL  
4.25



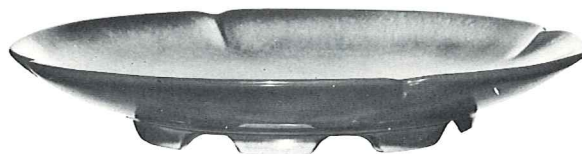
94P—17" PLATTER  
15.00



94J—2 CUP TEAPOT  
6.00



94D—2 QT. PITCHER  
8.50



5FC—15" CHOP PLATE  
20.00



242  
CORN DISH  
2.50

# Plainsman Pattern

AVAILABLE IN: Autumn Yellow, Desert Gold, Brown Satin and Prairie Green.



DESERT GOLD



PRAIRIE GREEN



AUTUMN YELLOW



BROWN SATIN

**5LS-45 PC. SERVICE SET FOR EIGHT, BOXED 125.00**

- |                |                |
|----------------|----------------|
| 8-Cups         | 1-13" Platter  |
| 8-Saucers      | 1-Creamer      |
| 8-14 Oz. Bowls | 1-Sugar        |
| 8-7" Plates    | 1-Sugar Lid    |
| 8-10" Plates   | 1-Serving Bowl |

**5TS-20 PC. STARTER SET FOR FOUR, BOXED 55.00**

- |                           |
|---------------------------|
| 4-Cups                    |
| 4-Saucers                 |
| 4-7" B & B Plates         |
| 4-10" Plates              |
| 4-14 Oz. Chili-Soup Bowls |

For thousands of years men have gloried in creating "atmosphere" around their favorite sport—eating. Harmonious and beautiful surroundings not only add to the pleasure of eating but make it a healthier pastime. We still lavish all we possibly can on our banquets and feasts, for we love to eat.

Men have always managed to devise some sort of receptacle to hold food, either raw or prepared, and the quality and value of his utensils depend more on his love of beauty and ability to create than the size of his purse. Of the many materials used throughout the centuries, in all countries of the world — iron, copper, brass, stone, wood, silver, and even gold, ceramics has remained the favorite of all eating vessels. Since the acceptance of "whiteware" in the sixteenth century, most fine tables have been set with "dinner ware" or "china." This is sometimes a white earthenware, or a compounded china body, or even a

translucent true porcelain. Its quality depends on the selection and handling of the materials plus its Art value expressed in line, form and color.

Today, from the crudest earthenware to the finest porcelain, we still choose CERAMICS of some kind for our table. Although we would not eliminate "whitewares," we love our modern pottery tableware. Why not? It is gay, happy, and colorful, and surely fits into our modern mode of living. It is with this in mind that we have created FRANKOMA TABLEWARE.

For one design we have gone to the Great Plains of the Southwest and offer you the "PLAINSMAN" pattern. Its well chosen, simple lines and sturdy shapes create an atmosphere benefitting its heritage. It is most appropriate "for fun or fashion." Every piece can be used in the microwave, oven and dishwasher.



\*5V—2 QT. BAKER/BEAN POT—8.50  
\*5V/W—BAKER/W WARMER SET—15.00



\*5W—3 QT. BAKER/BEAN POT—12.00  
\*5W/W—BAKER/W WARMER SET—18.50



\*5N—4½" QT. BOWL  
15.00



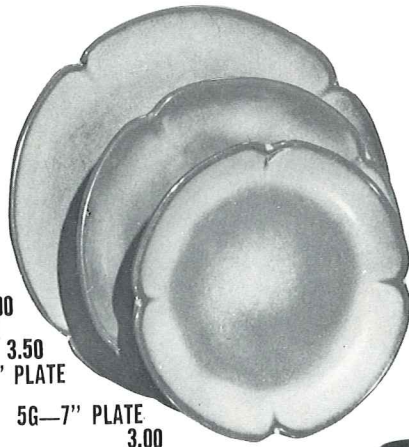
\*5XL—20 OZ. BOWL —3.50  
\*5X—14 OZ. CEREAL —3.00  
\*5XS—9 OZ. FRUIT —2.50



\*218—12" BOWL —7.00



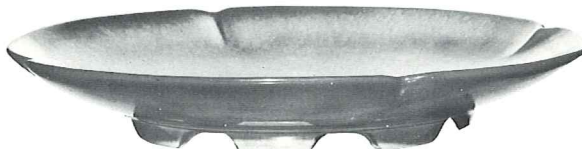
\*6S—TWO SPOUT GRAVY—6.00



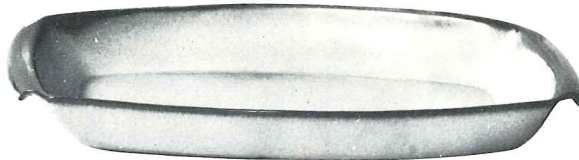
5.00  
5F—10" PLATE 3.50  
3.50  
5FS—9" PLATE  
5G—7" PLATE 3.00



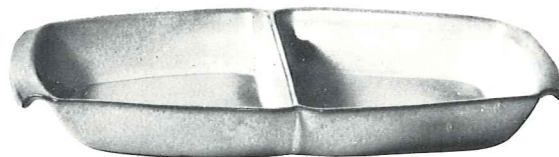
\*5NS—9" VEGETABLE 4.25



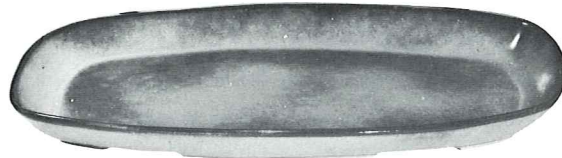
5FC—15" CHOP PLATE 20.00



5P—17" PLATTER —15.00 \*5Q—13" PLATTER —7.00



\*5QD—13" DIVIDED BOWL —7.00



5QS—13" PLATTER—4.50 \*5PS—9" TRAY —3.50

\*6P—11" PLATTER 4.00



\*6T—6 CUP TEAPOT—8.50



\*6J—2 CUP TEAPOT  
6.00



\*5M—16 OZ. MUG  
4.00



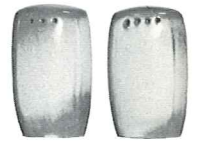
\*5CC—5 OZ.  
TEACUP  
2.50



5C—CUP—3.00  
5E—5½" SAUCER  
2.50



\*5LC—6 OZ.  
JUICE—3.00



\*5H—SALT & PEPPER  
4.25



\*5L—12 OZ.  
TUMBLER—3.50



\*5DB—6 OZ.  
SUGAR  
3.00



\*5DA—6 OZ.  
CREAMER  
3.00



\*5TL—12 CUP TEAPOT—12.00



\*5D—3 QT. PITCHER  
11.00

\*5AB—CREAM & SUGAR SET  
7.00

\*5A—12 OZ. CREAMER 3.00



\*5B—SUGAR WITH LID 4.50

THIS PAGE AVAILABLE IN BROWN SATIN, DESERT GOLD, PRAIRIE GREEN & AUTUMN YELLOW EXCEPT WHERE NOTED\*.

\*AVAILABLE IN ALL COLORS—ADD 50% FOR FLAME.

SIZES ARE APPROXIMATE AND MAY VARY SLIGHTLY.

Dinnerware Not Available in Terra Cotta.

# MAYAN-AZTEC Pattern

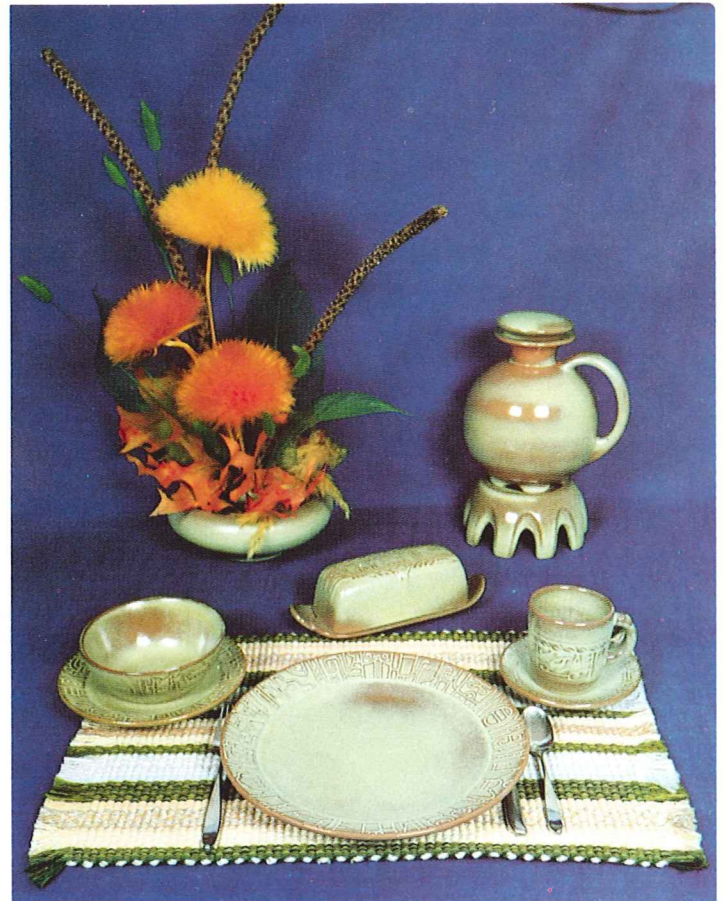
AVAILABLE IN: Desert Gold, Prairie Green and White Sand.



DESERT GOLD



WHITE SAND



PRAIRIE GREEN

**7LS-45 PC. SERVICE SET FOR EIGHT, BOXED 125.00**

- |                   |                |
|-------------------|----------------|
| 8-Cups            | 1-13" Platter  |
| 8-Saucers         | 1-Creamer      |
| 8-14 Oz. Bowls    | 1-Sugar        |
| 8-7" B & B Plates | 1-Sugar Lid    |
| 8-10" Plates      | 1-Serving Bowl |

1,000 YEARS before Columbus "discovered" America, there flourished a civilization in this country whose artistic, social, and religious standards far surpassed any European peoples up to that time. Many archeologists not only compare the art and architecture of the Mayans and Aztecs favorably with that of ancient Egypt, but in many respects prefer their achievements in art importance. THESE were the FIRST Americans.

It is well established that the nucleus of American Indian tribes spread from the Great Southwest region. Our particular interest is in those who went South—the Mayans and Aztecs. They have given to the world some of its richest art treasures. The "golden age" of Mayan Art, in which they developed their pantheon, built their temples, perfected their Arts, social structure and government, occupied the first few centuries after Christ.

The Great Temple in Copan, Yucatan, built to the War Diety, was completed just before the Spanish invasion. The temple compound covered almost a quarter square mile,

**7TS-20 PC. STARTER SET FOR FOUR, BOXED 55.00**

- |                           |
|---------------------------|
| 4-Cups                    |
| 4-Saucers                 |
| 4-7" B & B Plates         |
| 4-10" Plates              |
| 4-14 Oz. Chili-Soup Bowls |

comprising seventy-eight buildings — a most stupendous achievement and a monument to architectural beauty.

The most widely known of the Mayan and Aztec arts are the numerous hieroglyphs. They were used profusely on buildings, altars, monuments, and other such places, not only for embellishments, but for the recording of information. The decorations on the stairway of Copan alone were composed of over 2,500 different glyphs. Freehand methods prevailed entirely, for their art was their only written language.

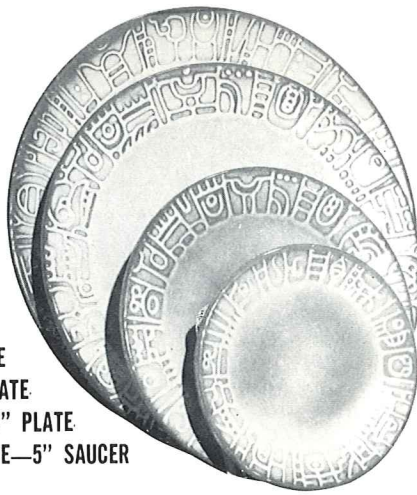
Pottery has always evidenced every strata of culture. Fragments of pottery have been found where all other records have been destroyed, even in prehistoric times. Throughout the long history of all Indian tribes, pottery has been the universal art. The pottery of the ancient Southwestern Indians challenges comparison in color, form, and mastery of line with that of the Greek and Orientals.

It is through the inspiration of this wealth of beauty that FRANKOMA has created its Mayan-Aztec tableware.





7V-2 QT. BAKER/BEAN POT 8.50  
7V/W-BAKER & WARMER, SET 15.00



5.00 7FL-10" PLATE  
3.50 7F-9" PLATE  
3.00 7G-7" PLATE  
2.50 7E-5" SAUCER



7D-2 QT. PITCHER  
8.50



7W-3 QT. BAKER/BEAN POT 12.00  
7W/W-BAKER & WARMER, SET 18.50



7B-SUGAR  
WITH LID 4.50



7A-6 OZ.  
CREAMER 3.00

7AB-CREAM & SUGAR SET 7.00



7C-CUP 3.00



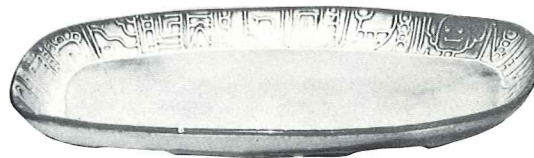
\*C4-12 OZ.  
COFFEE MUG  
3.00



7M-14 OZ. MUG 4.00



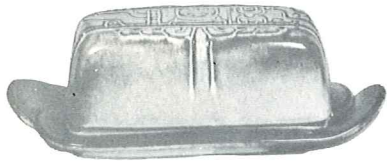
7H-SALT & PEPPER  
4.25



7QS-13" STEAK PLATTER (SHALLOW PLATTER)  
4.50



7XO-8 OZ. FRUIT  
2.50



7K-BUTTER DISH 6.00



7Q-13" DEEP PLATTER  
7.00



\*243-BONE DISH  
6 1/2"  
2.50



7X-14 OZ. CHILI-SOUP  
3.00



7PS-9" TRAY 3.50



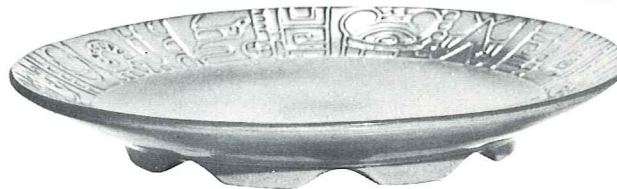
\*244-INDIVIDUAL  
VEGETABLE BOWL  
2.50



7XL-20 OZ. SALAD  
3.50



7J-2 CUP TEAPOT 6.00



7FC-15" CHOP PLATE  
20.00



7N-1 QT. VEGETABLE BOWL  
4.25



7T-6 CUP TEAPOT 8.50



7TP-17" AZTEC OVAL PLATTER  
15.00



\*242  
CORN DISH  
2.50

# FRANKOMA – An Idea Takes Shape

## Process of Manufacturing

Frankoma is hand crafted earthenware pottery. Frankoma is a complete pottery; we dig our own clay in Sapulpa, process it; develop and mix all our own glazes and colors; make our own molds and create our own designs.

Our pottery is formed in one of **two ways**; casting and pressing. Casting: (1) The clay is mixed with water to make a liquid clay called "slip", then poured into plaster molds. During the 45 minutes the slip sits in the mold, water is absorbed by the mold creating harder clay against the walls of the mold. The slip is then poured out, the clay the water was taken from remains, thus creating the piece. (2) After 4 more hours of drying and preparation the piece is removed from the mold to dry overnight. Pressing: (3) Because of the nature of the clay, some pieces cannot be made by casting. Therefore, we use a hydraulic press. The clay is placed between the two pieces of a mold. The top of the mold lowers up to 50 tons of pressure and forms the piece. All plates and flat pieces are made on the press.

Regardless if a piece is cast or pressed, it must be dried and then trimmed. (4) Each piece is hand trimmed. The rough edges are removed with a paring knife. (5) Then, to complete the smoothing process, the piece is wiped with a wet sponge. Frankoma is unique in that we fire our pottery only once; therefore, after the trimming, it is ready for the glaze, (glaze is the color, glaze is basically a liquid glass that melts and fuses with the clay when it is fired). The glaze is applied on the inside by "dipping". The glaze is simply poured in and then poured out, and it coats the inside. (6) Then the outside is glazed with a spray gun. The application of the glaze is very important. It must be applied just right, not too thin and not too thick. (7) The pottery is then fired for 18 hours at approximately 2,000 degrees. During the firing process the glaze melts, changes color, and becomes the piece of pottery you enjoy in your home. (8) All Frankoma's designs are original. This requires a complete well equipped mold shop with competent mold makers to effectively complete the designers ideas for production.

Because of the great demand and a desire to always maintain Frankoma as a leader in the ceramic field the plant has recently expanded to 79,000 square feet, employing 140 people who make up the Frankoma Family.

You are cordially invited to tour the plant during working hours.

COME SEE US . . .

There has been much said during the last few years about "lead poisoning" from using pottery dishes and containers. Shown here is the Official Seal of Certification, that this ware is ALL safe from lead poisoning.



• Practically all pottery wares made in the U.S. are so certified, so . . .

**Buy Frankoma!**  
Be Safe • Buy American



(1) Slip Casting



(2) Removing piece from mold.



(3) Pressing



(4) Trimming with knife.



(5) Sponging



(6) Glazing



(7) Stacking kiln for firing.



(8) Making a Mold

# FRANKOMA COLOR CHART



**BROWN SATIN**



**PRAIRIE GREEN**



**DESERT GOLD**



**TERRA COTTA**



**WHITE SAND**



**ONYX BLACK**



**AUTUMN YELLOW**



**ROBIN EGG BLUE**



**FLAME**

Frankoma has been 48 years developing shapes, colors, textures, glazes, types of Artware, and unique tableware, peculiar only to itself. We are **CREATORS**, never satisfied with the ordinary, or to just make cheaper what has already been done.

The body is unique, brick-red earthenware, basically from a local shale, combined with other earths, properly screened and aged. It is "once-fired" to about 2000° Fahrenheit, and carefully tempered when cooling to make it oven-proof, shock and chip resistant—built to "take it" in daily use.

The colors are all created and ground in our own laboratory. The color of the body is used as an undercolor for our unique two-tone effects. The rich vellum textures are lovely to touch, and are produced only by patient care in preparation and hours of proper cooling. **No one produces THESE glazes but Frankoma.** Tell your customers that—they will be delighted to know. They will be pleased that YOU know what you are talking about!

AVAILABLE IN 1981  
 COLOR: CELERY GREEN  
 5 OZ. COFFEE MUG



1981 ELEPHANT MUG  
 5.00

The original "Elephant Mug" was created for the National Republican Womens Club and copyrighted by Frankoma in 1969 and patented in 1970. The "Donkey Mug" was created in 1975 copyrighted and patented.

Now each year these mugs are produced by Frankoma as a stock item. The current mugs are only available during that year — Each year the color is different.

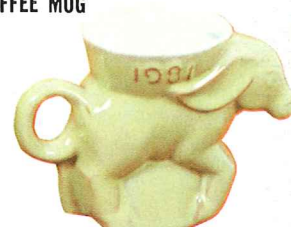
© F.P. 1975, U.S. Pat. No. D605,739  
 © F.P. 1969, U.S. Pat. No. D214,868

*Past Issues No Longer Available From Factory*

**PAST ISSUES ELEPHANT MUG COLORS**

1968 — White; 1969 — Flame; 1970 — Blue; 1971 — Black; 1972 — Prairie Green; 1973 — Desert Gold; 1974 — Coffee; 1975 — Autumn Yellow; 1976 — Centennial Red; 1977 — Pink; 1978 — Moss; 1979 — Brown Satin; 1980 — Terra Cotta.

AVAILABLE IN 1981  
 COLOR: CELERY GREEN  
 5 OZ. COFFEE MUG



1981 DONKEY MUG  
 5.00

**PAST ISSUES DONKEY MUG COLORS**

1975 — Autumn Yellow; 1976 — Centennial Red; 1977 — Pink; 1978 — Moss; 1979 — Brown Satin; 1980 — Terra Cotta.

**HOW TO MAINTAIN THE BEAUTY OF FRANKOMA:**

Frankoma's hand-mixed glazes are designed not only for beauty, but also for durability. The following simple steps will insure that beauty and durability.

1. Frankoma's glazes are durable, but the alloys in some flat ware may occasionally mark the finish. If these marks should appear on your pottery, a mild powdered cleanser should be used to remove them. Normal mild household cleansers will not harm the finish.
2. Cups and mugs should be rinsed after serving coffee or tea to avoid stains. Should a stain buildup occur you could restore the beauty of your cups by soaking them in a solution of 1/2 liquid bleach and 1/2 water.

**HOW AND WHERE YOU CAN PREPARE FOOD:**

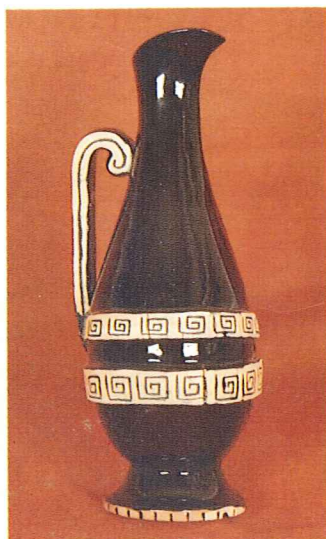
Frankoma is safe in conventional ovens, microwaves and dishwashers. However, it should never be used from cold temperatures into any heating unit. Frankoma should never be used directly on heat from either electric or gas ranges. Room temperature is best for placing of dinnerware in the oven. Hot serving pieces should never be placed on a cold or wet surface. For reasons unknown to us, some Frankoma pieces will retain heat in a microwave and other similar pieces remain normal.

**PROTECTING DELICATE SURFACES:**

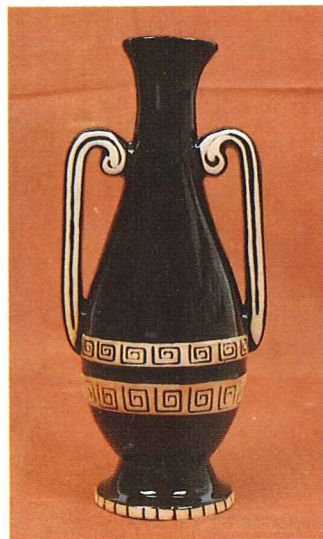
1. Due to Frankoma's unique red-firing clay it is necessary for each and every piece to have an unglazed surface on the bottom. Due to the nature of the product there may occasionally be an abrasive surface on the unglazed area. For this reason it is recommended to always use placemats or a tablecloth with any pottery, stone ware or china.
2. Pottery floral containers and planters require the same care as glass. Always place your container on a plate of some type. Condensation may occur on pottery as it does on glass, and a plate will protect your good wood finishes.

**WARRANTY:**

Frankoma Pottery carries a full three-year warranty against defects in materials or workmanship. Our warranty does not cover chipping. Frankoma Pottery is manufactured with as much durability as possible; however, chipping can occur if contact is made with another object. If you find you have a defective piece, contact your local representative or Frankoma Pottery, Customer Service Department, P. O. Box 789, Sapulpa, OK 74066.



No. V12 (15.00)



No. V13 (15.00)

Pictured are the two 13" limited edition vases #V12 & #V13 in the series. #V13 is designed as a companion vase to last year's single handled vase. There are a limited number of #V12 vases still available, and they will be produced until we reach #3,000. This vase as the #V12 is in Black with highlights of Terra Cotta in the Grecian design. The mold is signed by the artist—Joniece Frank. Each piece is numbered, and the master mold is destroyed after a total of only 3,000 are made. No seconds are sold.

You are a welcomed guest at the factory any time. Should you come during working hours, we will be glad to conduct you through the plant to see Frankoma made. (Tours Monday thru Friday, 8:30 a.m. — 2:30 p.m.)

**FRANKOMA POTTERY, INC.**

1-918-224-5511

P. O. Box 789 • 2400 Frankoma Road  
 Sapulpa, Oklahoma 74066

**FRANKOMA POTTERY MAY BE PURCHASED FROM:**

Grace Lee's Frankoma Pottery Shop, Inc. is located adjacent to the Frankoma Factory in Sapulpa, Oklahoma. The Gift Shop is open Monday through Saturday from 8:00 A.M. until 6:00 P.M. (Closed on Sundays and Holidays)

## TOURS OF FRANKOMA

Grace Lee's offer plant tours of Frankoma Pottery Monday through Friday from 8:00 till 2:30. We invite you to stop by and see how Frankoma is made.

## MAIL ORDERING

Our mail order service is used by many people to continue with their Frankoma Patterns or Collectables, and also for that special gift for a friend. To mail order, please use the enclosed order form to insure receiving the correct items and colors. After completing your order, use the Postage and Insurance Table to determine costs. Add 2% sales tax, and please enclose a check for the full amount of pottery & charges.

Seconds are sold through our Gift Shop, however they cannot be ordered or shipped by mail.

(Please Allow 4-6 Weeks For Delivery)

### Postage and Insurance Table

Pottery	Postage
0 to \$ 7.49	\$2.00
\$ 7.50 to \$14.99	\$2.50
\$15.00 to \$24.99	\$3.00
\$25.00 up	15% of Order

Thank You-----

FROM

Grace Lee's Frankoma Pottery Shop

